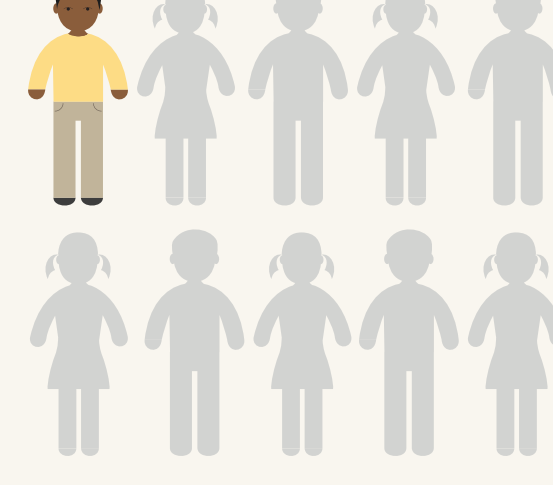


Tackling child labour in our cocoa supply chain

Child labour is a global problem.



According to the International Labor Organization (ILO), about **168 million children** are involved in child labour



That's about **1 in 10** of the world's children



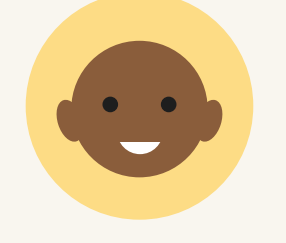
73 million of these children are between **5 and 11 years old**

What is child labour?

The ILO defines child labour as:



Work that deprives children of their potential and their dignity



Work that deprives children of their childhood



Work that is harmful to physical and mental development.



At Nestlé we believe child labour has no place in our supply chain.

We know there are children working on farms in Côte d'Ivoire in areas where we source cocoa.

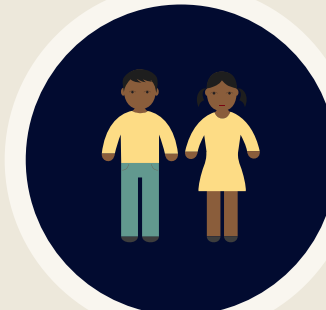
No company sourcing cocoa here can guarantee they've eliminated the risk of children working in their supply chain, but we are determined to tackle the problem.

"The use of child labour in our cocoa supply chain goes against everything we stand for,"

José Lopez, Nestlé Executive Vice-President for Operations.

We're the first cocoa buyer to set up a child labour monitoring and remediation system

With our partners and suppliers, we are examining:



How many child labourers are there?



Where are they working?



Why are they working?



How best to help them?

The International Cocoa Initiative

is our main partner in the system, helping to implement it at every level.



The system is built into our supply chain and works from the ground up



Why is this approach different?

It's giving us information about the conditions in farming communities and the context in which child labour occurs. This gives us a better chance to help individuals directly and respond to their specific needs.

Sometimes intervention efforts are simple.

- Getting a copy of a child's birth certificate so they can attend school.
- Providing children with school equipment and uniforms.

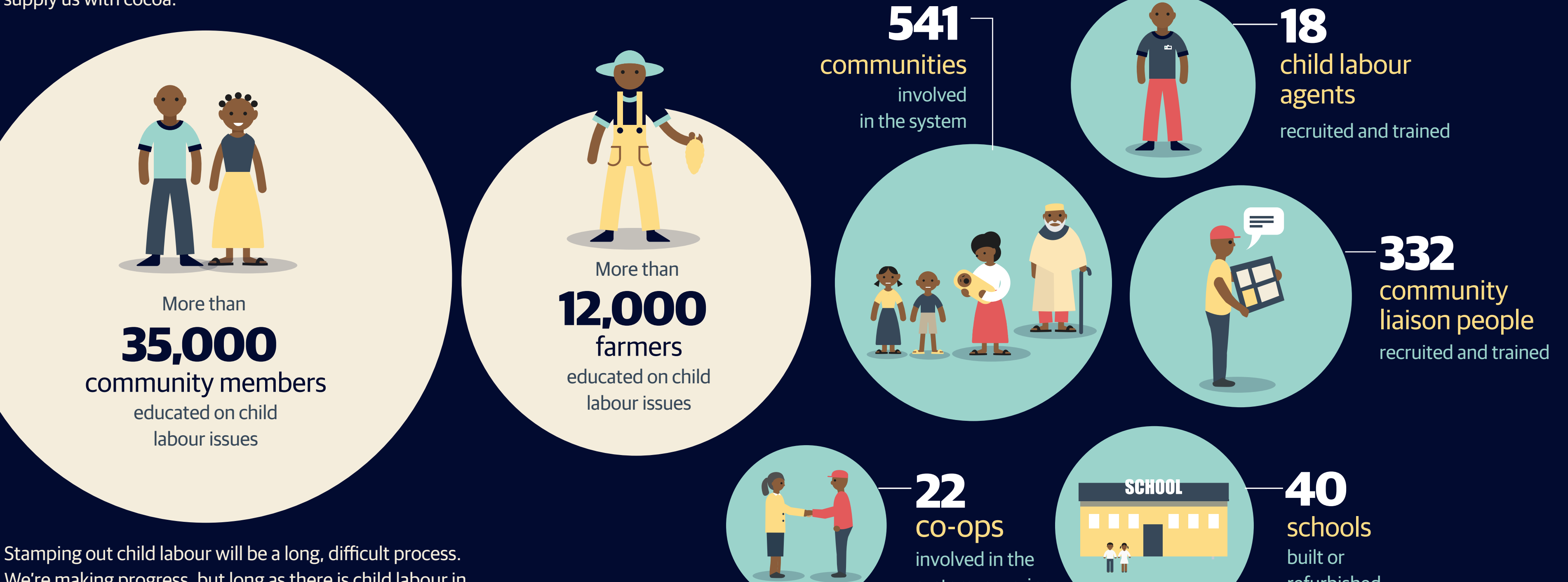
Sometimes they are complex.

- Making sure farming communities have schools nearby, by building or renovating them.
- Enabling mothers of children at risk to generate their own income to cover school costs for their children
- Setting up groups of adults to carry out hazardous tasks on farms
- Addressing the root causes of child labour by training farmers to improve their productivity to increase their income



What progress have we made?

Out of the 70 co-ops in Côte D'Ivoire that supply us with cocoa:



For more information:

- www.cocoinitiative.org/en/
- www.fairlabor.org/affiliate/nestle
- www.ilo.org/lpec/informationresources/WCMS_IPEC_PUB_23015/lang-en/index.htm
- www.nestlecocoa.com
- www.nestle.com/aboutus/ask-nestle/answers/nestle-child-labour-supply-chains
- www.stopthetraffic.wordpress.com/2014/08/13/change-is-happening-in-the-chocolate-industry/